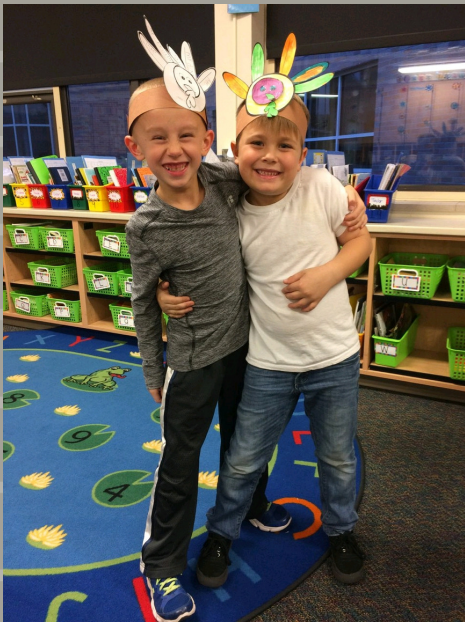




ANNUAL REPORT

GREATER MANHATTAN COMMUNITY FOUNDATION
REPORTING ON FISCAL YEAR 2017





The Boys & Girls Club of Manhattan received a \$85,500 grant from the YES! Fund for after-school & summer youth programs



Youth Impacting Community (YIC) awarded \$8,000 in grants to nine organizations



2017 GMCF Semi-Annual Trustees Meeting



Chris Nolte speaks about the Deihl grant awarded to Homecare & Hospice



Jo Lyle recognized as 2016 GMCF Volunteer of the Year at Semi-Annual Meeting



The GMCF Young Trustees held the first annual Chili Cookoff to benefit area non-profits



The First Tee Manhattan received both YIC & YES! Fund grants

TABLE OF CONTENTS

3-4	LETTERS FROM OUR LEADERS
5-6	NEW FUNDS OF THE FOUNDATION
7-8	COMMUNITY GRANTS - TYPES OF FUNDS
9-10	FUNDS OF THE FOUNDATION
11-12	FEE SCHEDULE - MATCH DAY & CFA'S
13-14	FINANCIAL REPORTS
15-16	AFFILIATE PROGRAM
17-18	EXECUTIVE BOARD/STAFF/TRUSTEES

555 Poyntz Avenue, Suite 269

P.O. Box 1127

Manhattan, KS 66502-1127

Phone: 785-587-8995

Fax: 785-587-8982

Email: Foundation@mcfks.org

www.mcfks.org



LETTER FROM OUR BOARD CHAIR

Karen Roberts

At the end of another successful year for the Greater Manhattan Community Foundation, it is important to recap the role of the Foundation for so many in our communities. Hundreds of individuals, businesses, and organizations have given to the Foundation in 2017, providing funds for grants to support a wide range of charitable activities. GMCF is the vehicle for our charitable giving needs, whether through donations or grants. We can support groups and issues of interest through a single organization.

The Greater Manhattan Community Foundation includes nine affiliates at this time, enhancing philanthropic giving throughout the region. We learn from each other, as we continue to facilitate the efforts of people who make charitable contributions to the community. Some of the affiliates have developed their own Match Days this year, in an effort to support giving in their communities.

It has been an excellent year with growth in assets, number of endowed funds, and grants given to organizations. It is exciting to attend receptions where grants are presented due to the work of the Yes! Campaign, GMCF and Diehl grants committees, and Youth Impacting Community (YIC). There is high energy in the room, when we see the benefits of making donations to the Foundation and giving to the organizations who will do great work to meet community needs.

We are planning for continued success of the Greater Manhattan Community Foundation through the outstanding work of the staff, the dedication of the board and trustees, the generosity of donors, and the support of volunteers. Thank you to each of you for the part you play.

Karen Roberts, Board Chair



LETTER FROM OUR PRESIDENT/CEO

Vernon J. Henricks

It's always a pleasure to share information about the Greater Manhattan Community Foundation year and to say "Thanks". The community foundation continued to make a difference in 2017 through the efforts of our many volunteers and fund holders.

I am especially pleased that we reached the threshold of \$80 million in assets in a year when we also gave away a record \$4.6 million in grants. In less than five years we have; more than doubled our assets, more than tripled our fund agreements, more than quadrupled our grants and more than quintupled our gifts and grants revenue.

We welcomed three individuals to our team in part-time roles in 2017. Leslie Scobey joined us as our Affiliated Coordinator based out of Sabetha, Mike McCall joined us and Director of Development in our Wamego affiliate and Shanita Thomas joined our financial services team in the Manhattan office as an administrative assistant. Our teams is now six strong with a 3.75 FTE.

My comments last year spoke of the many records we broke and the impact that was made in the community. I'm humbled to share that 2017 was no different. Each year our staff establishes ten (10) measurable stretch goals to strive for. They range from funds established to total assets managed. I'm pleased to share that we exceeded eight, were very close on achieving the ninth goal. Here is a brief summary of those goals and the comparative totals from five years prior:

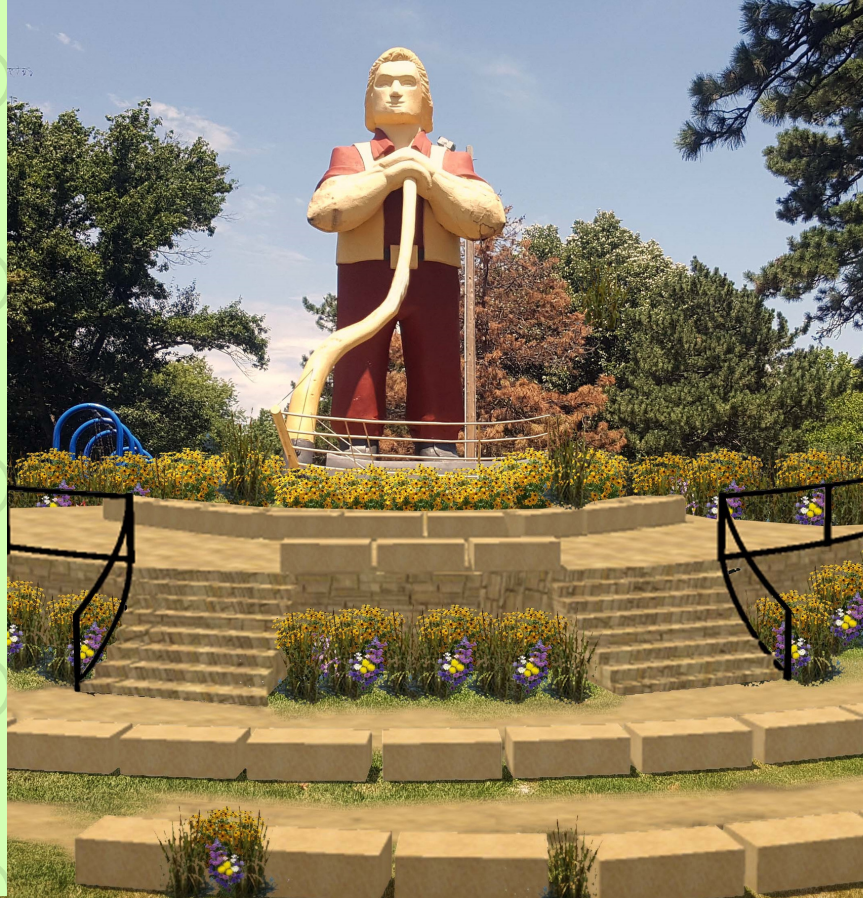
REACH \$80 MILLION IN FOUNDATION ASSETS 2017 - \$79,396,487 2012 - \$36.9
REACH \$45 MILLION IN GMCF ASSETS 2017 - \$49,144,788 2012 - \$17,898,834
REACH \$5 MILLION IN GIFTS AND GRANTS REVENUE 2017 - \$7,729,565 2012 - \$1,498,122
AWARD \$3 MILLION IN GRANTS TO COMMUNITY 2017 - \$4,610,992 2012 - \$993,840
RAISE \$1 MILLION IN NEW ENDOWED FUNDS 2017 - \$1,069,883 2012 - \$577,261
REACH 95% IN GIVING BY TRUSTEES 2017 - 82% (104/127) 2012 - 57% (59/103)
EXCEED \$225,000 IN YES! CAMPAIGN 2017 - \$227,140 2012 - \$181,135
ADD 15 NEW ENDOWED FUNDS 2017 - 20 2012 - 8
REACH 500 FUNDS 2017 - 537 2012 - 147
REACH \$450,000 FOR MATCH DAY 2017 - \$612,742 2013 - \$140,553

In summary, I want to again thank all of our volunteers, fund holders and affiliates for a tremendous year. We thank you all for what you do for your community and ask that you stay active and informed about our GMCF efforts.

Vern Henricks, President and CEO

New Funds in 2017

Radar's Fund
Aspire Fund
GMCF Hurricane Harvey Fund
Kids Bikes Recycling Fund
Works of Mercy Fund
Kids Across America Fund of Manhattan
Relate 360 Fund
Riley County USD 378 Communities Foundation Fund
Ecumenical Campus Ministries (ECM) Endowed Fund
John A. Dorsey Memorial Fund
Friends of Johnny Kaw Fund
One Rotarian One Tree Fund
Prairiewood Connect Foundation Fund
Erma J. (Karr) Riley Smurthwaite Scholarship Fund
Flint Hills Discovery Center Youth Education Endowed Fund
Phillip Martin & Amanda Sue Puntney Journalism Grant Fund



Friends of Johnny Kaw Fund

Friends of Johnny Kaw is a citizens group working to make some improvements to the Johnny Kaw Statue in City Park. The improvements will fit with the Park Master Plan – but will not be taxpayer funded. The plan is to be totally in line with the original group that built the Johnny Kaw Statue – As Geo.A. Filinger wrote in April of 1966:

Friends of Johnny Kaw and believers in the Pioneer spirit he represents are building a statue of the great wheat grower in the Manhattan City Park. (With taxpayer's money? Certainly not!) It is the hope of all who contribute money, materials or efforts, that the statue will be a tribute to all Pioneers and that all who see Johnny Kaw will be inspired to try to emulate (whatever that means) that pioneer spirit. The sponsors hope that thousands of friends, tourists, and businessmen will stop to see Johnny Kaw and incidentally, get better acquainted with Manhattan and with the entire Midwest. Everyone in typical western hospitality will welcome them and make them feel at home.

The new "Friends of Johnny Kaw" plan on continuing with the Pioneer spirit and give the immediate area around the statue a face lift – and more important add some signage to identify the Great Kansas Wheat Grower and highlight some of his accomplishments. The city in past years sponsored a Johnny Kaw Club membership card, and Friends of Johnny Kaw have brought the club membership card back to help with fund raising.

The statue of Johnny Kaw in the City Park was completed and dedicated in May 1966. The legend of Johnny Kaw was compiled by Dr. George Filinger and the tales of Johnny were chronicled in the book The Story of Johnny Kaw. The statue was erected at no cost to the city. Local businessmen donated the steel and concrete; other businesses gave materials and donations were solicited to pay for construction.

The Friends of Johnny Kaw hope to continue the Pioneer Spirit of the 1955 and 1966 creators of the Johnny Kaw statue and expand upon the vision to create "a statue that would do justice to our pioneers. To make progress someone must improve something. Such was and is the Pioneer Spirit". Johnny Kaw is the embodiment of that spirit. Citizens may become part of the Pioneer Spirit of Manhattan and our Great State of Kansas by joining the Johnny Kaw Club.

Johnny Kaw Club membership cards are on sale for \$5.00 at the Discovery Center, Sunset Zoo, The Manhattan Chamber of Commerce, The Riley County Historical Museum and Claflin Books.

The Friends of Johnny Kaw Fund is now part of the Greater Manhattan Community Foundation. The Fund is listed under Preservation, Conservation & Beautification. You can donate online at the GMCF website <https://secured.netstorekeeper.com/mcf/giftstogmcf.cfm>. Please help continue the Johnny Kaw Pioneer Spirit by helping to restore the Statue, enhance the area around the Statue and install signage to highlight the Great Kansas.

RADAR'S FUND

TO ASSIST WITH MEDICAL CARE



Photo by Little Leaping Photography

Radar was a border collie that arrived with Riley County Humane Society (RCHS) with uncontrolled seizures, a funny gait and a missing eye. RCHS got his seizures under control and closed his eye appropriately so it wouldn't collect debris. They also did hip radiographs and learned that his hips were fine but he likely had a lower back issue. Thankfully it didn't seem to bother him much, he just moved differently.

Radar was an incredibly sweet boy who adored his foster mom and his cat buddy but he had a few other personality quirks that made him a difficult dog to adopt. He was a bit of an alternative learner and it took quite a bit of trial and error to learn the best way to communicate with him. Ultimately, RCJS staff loved Radar but knew he would be a difficult dog to adopt. So they were thrilled when his new mom Sarah contacted us! She was up for the challenge of dealing with a special needs dog and she has done an amazing job with him. Sarah is a PhD candidate at Washington State University studying immunology and interested in working in the companion animal health field.

Radar's foster was the person who initiated Radar's Fund with GMCF to assist Sarah with Radar's continued medical care. Sarah is absolutely the best possible owner for Radar, he is incredibly well loved and cared for. However, he is not a simple or inexpensive pet. The fund has been helpful for her in addressing Radar's continued needs. Gifts can be made to Radar's Fund at www.mcfks.org.

2017 GRANTS TO THE COMMUNITY

Grants for Greater Manhattan*

TOTAL AWARDED \$124,751

Adult Learning Center
Big Brothers Big Sisters of Manhattan
Bluemont Elementary School
Crisis Center, Inc.
Downtown Farmers' Market of Manhattan, Inc.
Flint Hills Breadbasket
Flint Hills Foster Teen Camps
Flint Hills Summer Fun Camp
Flinthills EAA Chapter 1364
Friends of Konza Prairie
Headquarters, Inc.
Manhattan Area Habitat for Humanity
Manhattan Retirement Foundation, Inc.
Manhattan Royal Family Kids Camp
Midwest Educational Center, Inc.
Morning Star Inc. CRO
Mt. Zion Family Daycare
Panther Power Club
Parents as Teachers
Pawnee Mental Health Services, Inc.
Relate 360 Inc.
Riley County Community Corrections
Riley County EMS
Riley County Health Department
Shepherd's Crossing, Inc.
Stormont Vail Foundation
Sunflower CASA Project, Inc.
Thrive!
UFM Community Learning Center

Youth Impacting Community*

TOTAL AWARDED \$8,000

Big Brothers Big Sisters
First Tee of Manhattan
Flint Hills Foster Teen Camps
Flint Hills Summer Fun Camp
Manhattan Emergency Shelter, Inc.
Royal Family KIDS Camp
Sunflower CASA Project, Inc.
Thrive!
Toys of Manhattan

*Unrestricted General Endowment Funds

Fund holders can support community needs by providing unrestricted support. You can create a named endowed fund where the foundation's board of directors will use the funds to address changing community needs. Unrestricted general endowed funds provide the support for the Grants for Greater Manhattan and YIC Grants programs. By giving to the Fund for Greater Manhattan, you can provide funding for these grant programs.

YES! Fund

TOTAL AWARDED \$226,000

Big Brothers Big Sisters
Boys & Girls Club of Manhattan
Flint Hills Volunteer Center, Inc.
Friends of Sunset Zoo, Inc.
Girls on the Run of the Flint Hills
KSU Golf Course Management & Research
Manhattan Arts Center, Inc.
Manhattan-Ogden Public Schools
Foundation
Midwest Educational Center, Inc.
Royal Family KIDS of Manhattan

Goldstein Foundation**

TOTAL AWARDED \$315,811.40

Children's Mercy Hospital Foundation
Flint Hills Summer Fun Camp
Manhattan Emergency Shelter, Inc.
Manhattan-Ogden Public Schools
Foundation
Riley County Seniors' Service Center
Wonder Workshop
YES Fund

Howe Family Foundation**

TOTAL AWARDED \$215,672.25

Big Brothers Big Sisters of Manhattan
Big Lakes Developmental Center, Inc.
Boys & Girls Club of Manhattan
Crisis Center, Inc.
Flint Hills Breadbasket
Flint Hills Foster Teen Camps
GMCF Grant Writer Program
GMCF Intern Program
Guardians
Konza United Way
Manhattan Emergency Shelter, Inc.
No Stone Unturned Foundation Inc.
Pawnee Mental Health Services Inc.
Shepherd's Crossing, Inc.
Thrive!
Youth Impacting Community

**Supporting Organizations

Supporting organizations are separate legal entities that are affiliated with the Community Foundation. They are established with their own boards, grantmaking identities, and governance structures. Supporting organizations enjoy public charity status and the professional services of the foundation which includes staff and administrative support.

TYPES OF FUNDS

The Community Foundation offers a variety of fund options to help you meet your philanthropic goals. From donor-advised funds (where you engage in active grantmaking recommendations) to unrestricted funds (which rely on the Foundation's knowledge of community needs for grantmaking decisions), our funds allow you to choose your level of participation.

You can establish a fund using cash, securities, closely-held stock, mutual fund shares, real estate, business interests (limited partnership shares, LLCs, etc.) and many other types of assets.

Donor Advised Funds

Donor Advised Funds are charitable funds for those seeking active involvement in grantmaking. Fund holders – and their successors, if desired – advise or recommend grants from their fund to support nonprofit organizations. Fund holders work with GMCF staff to create a lasting, impactful philanthropic legacy.

Field of Interest Funds

Field of Interest Funds are funds that have been established by the Community Foundation for granting to a broad area of interest rather than a single nonprofit organization in a particular field. Field of Interest Funds are also endowed funds, meaning that they will continue to make annual grants in perpetuity.

Scholarship Funds

Scholarship funds support those who want to pursue education, whether they're high school graduates pursuing a college degree, young athletes seeking assistance with additional training or nontraditional students who are returning to the work force. Fund holders work with Foundation staff to devise selection criteria.

Supporting Organizations

Supporting organizations are separate legal entities that are affiliated with the Community Foundation. They are established with their own boards, grantmaking identities, and governance structures. Supporting organizations enjoy public charity status and the professional services of the foundation which includes staff and administrative support.

Unrestricted General Endowment Funds

Fund holders can support community needs by providing unrestricted support. You can create a named endowed fund where the foundation's board of directors will use the funds to address changing community needs. Unrestricted general endowed funds provide support for the Grants for Greater Manhattan and YIC Grants programs.

Designated Funds

You may wish to support a specific nonprofit organization. Once the fund is established, grants are made annually to the organization(s). Foundation staff monitor the organization to honor your philanthropic intentions. With a designated fund at the Community Foundation, you receive professional management and grant monitoring. Nonprofit Organizations can establish endowment funds to provide financial support to their organization in perpetuity and be a conduit for planned gifts. Designated Funds may also be established to benefit capital campaigns.

2017 Grants Disbursed

Grants for Greater Manhattan	129,275.35
Deihl Community Grants	278,993.31
YES! Fund Grants	226,000.00
YIC Grants	8,000.00
Scholarships	102,498.00
Donor Advised & Designated Fund Grants	3,012,595.66
Fiscal Sponsorships	528,920.98
Goldstein Foundation	315,811.40
Howe Family Foundation	215,672.25
TOTAL	\$4,817,776.95

GMCF FUNDS

Animals

Henry G.& Shirley Wassenberg Charitable Fund (KSDA)
James A. & Mavis Fletcher Fund for Animal Welfare
Polly Stoecklein Fund for Humane Treatment of Animals
Radar's Fund
Riley County Humane Society Fund

Arts & Humanities

Gene Grosh Endowment for the Arts
GMCF Fund for Arts & Humanities
Lincoln & Dorothy Deihl Beach Museum of Art Fund
Little Apple Barbershop Chorus Fund
Manhattan Arts Center Endowed Fund
Riley Co Genealogical Society Library Fund
Riley Co Genealogical Society Organization Fund

Basic Human Needs and Healthcare

Aspire Fund
Big Lakes Foundation, Inc. Fund
Brian Lynn Blecha Memorial Fund
Crisis Center Fund to Stop Domestic Violence
Endowment for Community Health
Engineers4Cancer
Fairy Godmothers Endowed Fund
Fairy Godmothers Grants Fund
Fairy Godmothers Operating Fund
Flint Hills Breadbasket Fund
Flint Hills Community Clinic Expendable Fund
GMCF Fund for the Elderly
GMCF Public Health Endowment Fund
Green Apple Bikes Fund
Guardians Endowed Fund
Guardians Grants Fund
Guardians Operating Fund
Habitat for Humanity-Legacy Club Fund
Homecare & Hospice Fund
Jim Reed Flint Hills Community Clinic Endowed Fund
Kids Bikes Recycling Fund
Konza United Way
Manhattan Emergency Shelter Fund
Manhattan Medical Missions, Inc. End. & Exp Funds
Meadowlark Hills Good Samaritan Fund
Mercy Community Health Foundation
Pawnee Mental Health Services
Riley County Medical Society
Riley County Perinatal Coalition End & Exp Funds
Riley County Police Dept. Employee Assistance Fund
Ronald McDonald House Charities of NE Kansas Fund
Senior Center Fund
Shepherd's Crossing Endowed & Expendable Funds
Sock It To 'Em Sock Campaign Manhattan Area Fund
Van Scoyoc Fund for the Developmentally Challenged
Wareham Family Foundation
Works of Mercy Fund

Children & Youth

Athletes in Action
Big Brothers Big Sisters Nellie Glenn Fund
Boy Scouts of America-Coronado Area Council
Boys and Girls Clubs of Manhattan End & Exp Funds
Children's Christian Concern Society Endowed Fund
David L. Flinchbaugh-Parents As Teachers
Don Dodge Fund for Youth & Aviation
Flint Hills Children's Autism Support Fund
Flint Hills Discovery Center Youth Education Fund
Flint Hills Foster Teen Camps
Flint Hills Leadership Children's Fund
GMCF Fund for Education & Youth
Gregory P. St. Amand Memorial Fund
Instruments for Interested Youth
Kids Across America Fund of Manhattan
KSUGCMRF: The First Tee Fund
Little Apple Optimist Club Fund
Lois Blackman Endowed Fund
Manhattan Baseball Association Fund
Manhattan Breakfast Optimist Youth & Comm Svc Fund
Manhattan Football Foundation Fund
Manhattan Kiwanis Youth Fund
Need 2 Read Fund
PUMA FC Manhattan Expendable Fund
Relate 360 Fund
Riley County 4-H Foundation End & Exp Funds
Riley County USD 378 Communities Foundation Fund
Roger Trenary Tennis & Education Fund
Sunflower CASA Endowed & Exp Funds
Toys for Manhattan
Tyler Dowling Memorial Fund
Tyler J. White Memorial Fund
Wonder Workshop Endowed Fund
YES! Endowed Fund
Yes! Fund (Youth Empowerment for Success)
Youth Impacting Community Endowed Fund

Community Development & Leadership

Flinthills Leadership Endowment Fund
GMCF Fund for Community Dev. & Leadership
GMCF Young Trustee Fund
Green Dress Project Fund
Junior League of the Flint Hills Fund
Kaw Valley Rodeo Association Inc. Fund
Konza Rotary Endowed Fund
League of Women Voters Edith Stunkel Fund
Little Apple New Year's Eve Fund
Servicemember Agricultural Vocation Education Fund
Whoville Fund

GMCF Support

Founders Fund
GMCF Operations Endowment Fund
John and Mary Lee Graham Fund

Donor Advised Community Support

Amy & Jerrod Westfahl Family Fund
Bernard & Carla Behrends Fund
Carol Oukrop Fund
David and Judith Regehr Family Fund
Dennis & Rhonda Mullin Advised Fund
Donald and Hazel Parrish Fund
Donn & Joan Leach Fund
Goldstein Community Fund
Grant Junghans Memorial Fund
Herman and Bettie Roesler Fund
Jack & Joann Goldstein Charitable Funds
Jackson Family Fund
James & Debra Gordon Advised Fund
James Wright Fund
Jean A. Dorsey Memorial Fund
John & Karen McCulloh Advised Fund
John and Mildred Lindholm Fund
Joseph M. Reilly Memorial Fund for Alzheimer's/Dementia
Kansas State Bank Community Fund
Keith and Sheri Westervelt Advised Fund
Kingdom Building Fund
Lewison Family Fund
Lincoln & Dorothy Deihl Advised Fund
Little Apple Toyota Honda Fund
Marks Family Fund
Marvin Robinson Fund
Matt and Amy Paquette Family Fund
Matthew James Soldan Memorial Fund
Nelson and Marilyn Galle Donor Advised Fund
O'Boyle Family Fund
Orphan and Widow Care Fund
Phil & Margaret Howe Fund
Reitz Family Fund
Robert Williams & Diana Bauer Fund
Ryan W. Sloan Memorial Fund
Scott and Jodi Bouyack Fund
Steel & Pipe Supply Community Fund
The Trust Company of Manhattan Advised Fund
Tod & Brenda Morgan Advised Fund
Tom & Sandy Barth Family Fund
William L. Richter Endowment

Preservation, Conservation & Beautification

East Bridge Pier Project
Edna Williams Wolf House Historic Site Fund
Fitz House Fund
Friends of Johnny Kaw Fund
Friends of Peace Memorial Auditorium Fund
GMCF Fund for Preservation, Conservation & Beautification
Jan Garton Memorial Fund for Environment
Kiwanis Bluemont Hill Overlook Fund
One Rotarian One Tree Fund
Prairiewood Connect Foundation Fund
Sunset Zoo & Wildlife Conservation Trust Foundation
Tuttle Creek Lake Association Fund
Water Matters Day Fund

Scholarship & Education

AAUW Manhattan Branch KSU Scholarship Fund
Academy of Veterinary Consultants
Benjamin L. Hopper Fund
Bonnie Verbrugge Memorial Scholarship Fund
Casey Kline Memorial Scholarship Fund
Clint and Billie Hill Memorial Scholarship Fund
Delta Sigma Phi Educational Fund
Erma J. (Karr) Riley Smurthwaite Scholarship Fund
Fairchild Terrace Scholarship Foundation Funds
Fately/Hammer Fund for Collaborative Research
Flint Hills Christian School Cindy Blanchard Scholarship
Flint Hills Christian School Endowment
Flint Hills Discovery Center Youth Education End. Fund
Gordon Morrison Scholarship Fund
Herman, Bettie and David Roesler Fund
Homecare & Hospice Employee Education Fund
Kansas Farm Bureau Foundations Donor Advised Fund
KFAC Endowment Fund
KSU Fund for Excellence
Leadership Manhattan Scholarship Endowment
League of Women Voters Stella Harris Scholarship Fund
Loren L. Mall Fund
Loriell Cross Women Education & Youth Art Fund
Luckey Endowment Fund for Manhattan Catholic Schools
MAMTA College Scholarship Fund
Manhattan Catholic Education
Manhattan Kiwanis Scholarship Fund
Manhattan-Ogden Public Schools Endowed Fund
Marge Bernard Allen Fund for Adult Education
MATC Briggs Auto Mechanic Scholarship
MATC General Scholarship Fund
MATC Greg Davis & Leigh Poston Scholarship
MATC Lewis & Ernest Braun Scholarship
MATC Teaford Nursing Scholarship
Phillip Martin & Amanda Sue Puntney Journalism Grant
PUMA FC Manhattan Scholarship Fund
Riley County Extension Education Fund
Riley County Police Department Scholarship Fund
Roger Alan Parrish Scholarship Fund
Sisters of '75 Fund
UFM Community Learning Center Funds

Unrestricted Funds

C. Clyde & Margaret S. Jones Fund
Florence Day Fund
Fund for Greater Manhattan
GMCF Trustees Endowed Fund
Jean Caul Fund for the Community
Manhattan Community Memorial Fund

Church

Ecumenical Campus Ministries (ECM) Endowed Fund
First Congregational UCC Fund
Henry & Shirley Wassenberg Endowment for the Saint Gregory Catholic Church
St. Isidore's Catholic Student Center Endowment
Unitarian Universalist Fellowship Fund
UUFM Lay Leader Development Fund

GMCF Administrative Fee Schedule

GRADUATED FEE

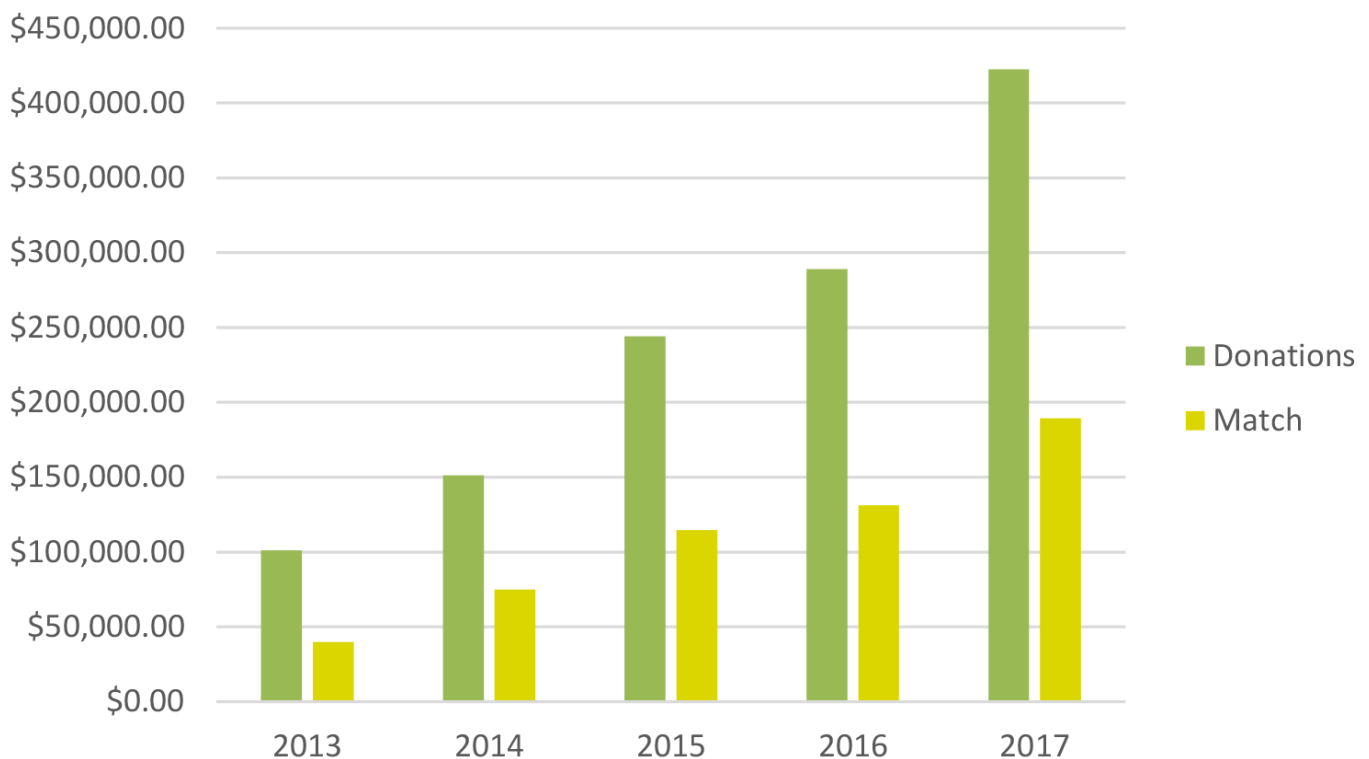
First	\$1,000,000.00	1%
Next	\$4,000,000.00	0.60%
Next	\$5,000,000.00	0.30%
Over	\$10,000,000.00	0.00%

AVERAGE FEES FOR FUNDS OF THESE SIZES:

Fund Size	Effective Fee Rate
\$1,000,000	1.000%
\$2,000,000	0.800%
\$3,000,000	0.733%
\$4,000,000	0.700%
\$5,000,000	0.680%
\$6,000,000	0.617%
\$7,000,000	0.571%
\$8,000,000	0.538%
\$9,000,000	0.511%
\$10,000,000	0.490%



GROW Green Match Day 2013 - 2017





Rising Star Time Award
Lucas Shivers with Cheryl Grice,
GMCF Board member



Non-profit Service Award
Maribeth Kiefer, Executive Director, Flint Hills
Breadbasket & Neil Horton, GMCF Board member



Distinguished Volunteer Award
Dr. Keith Wright with Jerry Banaka,
GMCF Board member



**2016 GMCF Young Trustee of the
Year, Tony Parker, with Matt
Crocker, GMCF Board member**



GMCF Lifetime Contribution Award
Don Dodge (accepted by Marvin Hornbostle)



**2016 GMCF Professional Advisor
of the Year, Lisa Ward**



GMCF Philanthropists of the Year
Russ Briggs, with Neal Helmick,
GMCF Executive Board

In 2017, the fourth annual Community Foundation Awards (CFA's) were hosted by the Greater Manhattan Community Foundation, with over 500 guests in attendance. The CFA's recognize & celebrate local citizens for the Time, Talent, & Treasure they share so unselfishly to positively impact the lives of others. This special evening of awards and local entertainment is meant to honor those volunteers, non-profits, & philanthropists & focus on the great things they do in our community.



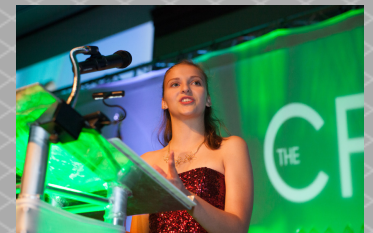
**2016 GMCF Professional Advisor
of the Year, Richard Pinaire, with
Matt Paquette, GMCF Board member**



**Outgoing Board Chair, Neal
Helmick, with Karen Roberts,
incoming Chair**



PRESENTED BY
GREATER MANHATTAN COMMUNITY FOUNDATION



**2016 GMCF Youth Volunteer,
Christina Griesse**



Non-Profit Service Award
Penny Senften, Director, Manhattan Arts Center
with Therese Miller, GMCF Board member



Individual Treasure Award
Bill & Faye Kennedy, with Jodi Kaus,
GMCF Board member



Business Treasure Award
Neil Horton, Bayer Construction Company,
with Dean Thibault, GMCF Board member

Legacy Club Members

The Greater Manhattan Legacy Club provides a way for the Foundation to recognize generous individuals who have made plans to benefit this community's future. While personal and family obligations should always come first, a planned gift to the Foundation is a simple way to create an enduring legacy.

Terry & Claire Beck
Douglas Beech
Benjamin L. & Stella J. Brown
Phillis Cable
Glennis A. Carlson
Bonnie Catterson*
Mark Catterson
Jean F. Caul*
Florence D. Day*
Lincoln W.* & Dorothy I. Deihl*

Don D. Dodge*
Brendon & Annelee Donnelly
Mavis Fletcher*
Tom & Angie Fryer
James & Deb Gordon
John* & Mary Lee Graham
Joleen Hill
Harry Jacobson*
Mark & Ann Knackendoffel
Donn & Joan Leach

Frank & Loida Leone
Karen McCulloh
Nancy Morse
Dennis & Rhonda Mullin
William L. Richter
Delores Blacker Thomas
Mary Vanier
Dave & Grace Weaver

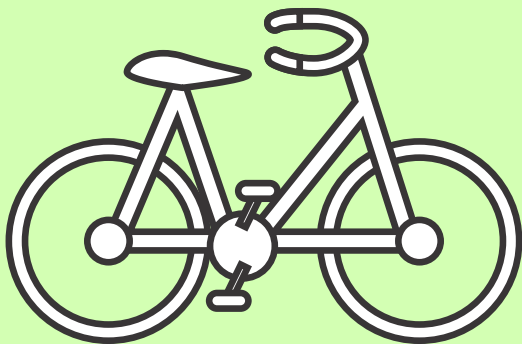
*Deceased

Kids Bikes Recycling Fund

The purpose of this fund started in 2017 is to refurbish bicycles that will then be given to local youth. It was determined that some children and teens were using Green Apple Bikes (GABs) continuously as a form of transportation. The Kids Bikes Recycling (KBR) program provides these young people with a refurbished bike if they agree to use them instead of GABs. The riders are provided a helmet, water bottle, and lessons to teach them how to properly ride the bike and use the gears.

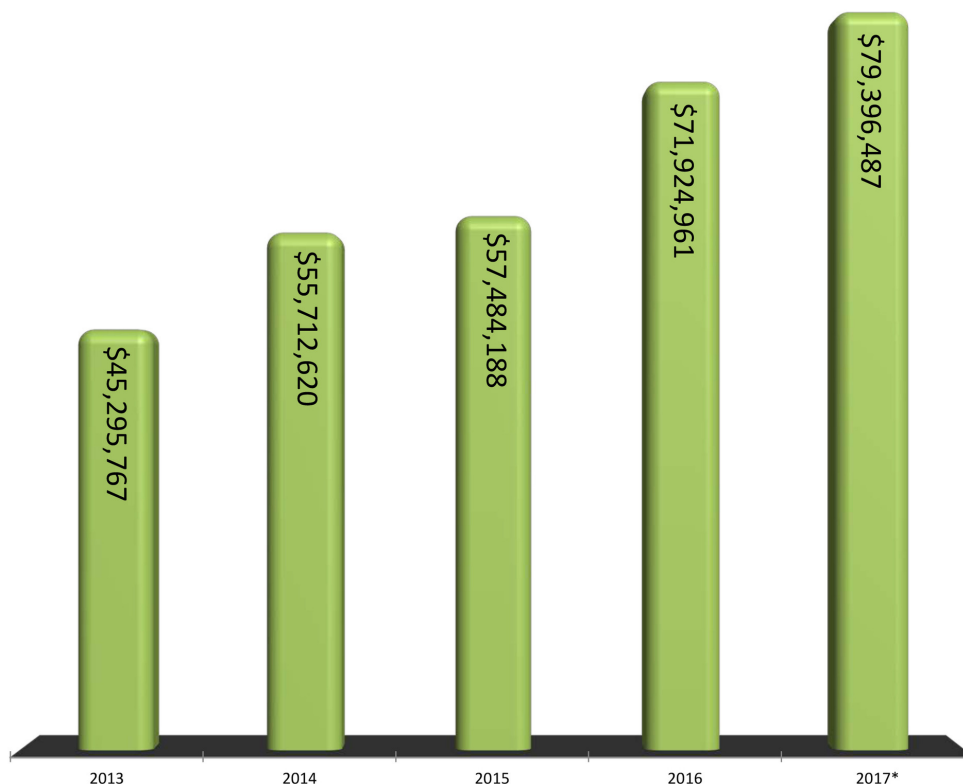
KBR Has:

- Prepared 30 bikes for the City Bike Swap in May of 2017.
- Provided bicycles for foster children. As the children grow or move, they are able to take the bike with them, or exchange it for a larger one. KBR provides these foster children with a bike helmet and water bottle.
- Organized a bike swap for Ogden USD 383 Back to School event where eighty bikes were swapped. A total of 18 volunteers repaired bikes, changed tires, fit bikes and helmets, and handed out water bottles.
- Sponsored a 67 mile ride for Sunflower CASA
- Project, Inc.
- Refurbished and donated 50 bikes to Toys for
- Manhattan for their free shopping events.

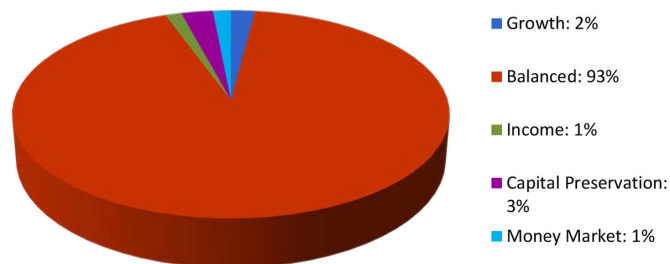


The Kids Bikes Recycling program hopes to add additional bike swap events in the future. Their greatest need is funds to help pay for refurbishing costs. Donations can be made to the KBR Fund at www.mcfks.org.

Assets



Assets by Investment Pool



STATEMENT OF FINANCIAL POSITION

December 31, 2017*

ASSETS

Cash and cash equivalents	\$3,907,603.91
Other (Prepaid expenses, deposits)	495.00
Investments	44,521,720.37
Privately Held Stock	30,152,530.83
Annuities and insurance policies	799,531.46
Fixed Assets (net)	14,605.57

Total	\$79,396,487.14
--------------	------------------------

LIABILITIES AND NET ASSETS

LIABILITIES

Annuities payable ST	\$34,220.28
Annuities payable LT	204,519.79
Grants payable	203,250.00
Funds held for others	2,352,977.28
Total Liabilities	\$2,794,967.35

NET ASSETS

Fund Balance - Historic Gifts	\$44,975,849.84
Fund Balance - Earnings	14,149,212.41
Fund Balance - Available	17,476,457.54
Total Net Assets	\$76,601,519.79
Total	\$79,396,487.14

STATEMENT OF ACTIVITIES

Year ended December 31, 2017*

REVENUES

Gifts and bequests	\$7,450,928.57
Grants	\$25,000.00
Investment performance	4,796,570.64
Other revenue	524,093.73

Total Revenue	\$12,796,592.94
----------------------	------------------------

EXPENSES

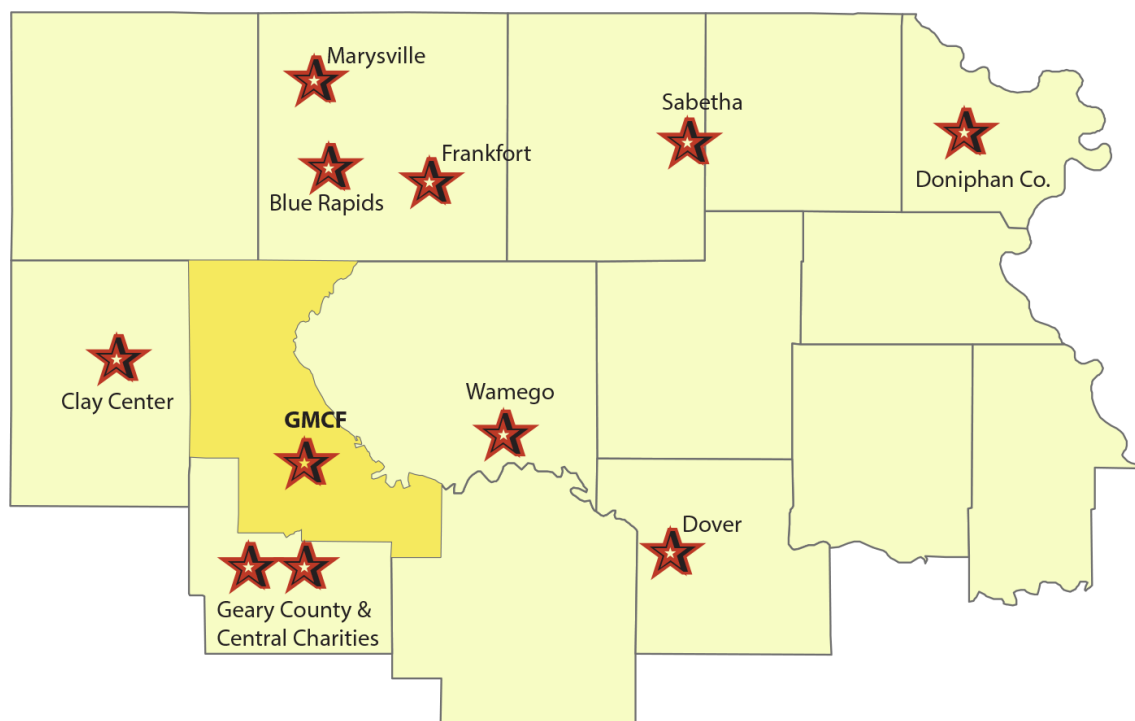
Grants and program expenses	\$4,957,780.01
Management and general expenses	474,087.43
Total expenses	\$5,431,867.44

Increase in net assets	\$7,364,725.50
Net assets at beginning of year	69,236,794.29

Net assets at year end	\$76,601,519.79
-------------------------------	------------------------

*Unaudited

The Greater Manhattan Community Foundation's Affiliate Program provides a mechanism to build local philanthropy across NE Kansas. Affiliates receive financial and administrative services, marketing support, and technical assistance from GMCF staff. In 2017, GMCF added one new affiliate, the Clay Center Community Improvement Foundation. Blue Rapids requested affiliation at the beginning of 2018. We welcome all of these foundations to our organization and look forward to working to ensure that they, as well as all of the affiliates, have very bright futures!



Established: Sept. 13, 2001
 Total Assets: \$ 1,734,644
 Donations this year: \$280
 Number of Funds: 5
 Grants awarded this year: \$24,238

2017 Board of Directors
 Rob Sage-Chairman
 Sharna Crow-Vice Chair
 Jill Cook-Secretary
 Betty Schwant-Treasurer
 Brad Bassett, James Bassett, Michael Browning, Neil Crow, Ken Gimple, Fred Guzek, Kelly Hoelting, Clinton Lambotte, Cole Rutledge, Everette Thomas, Norma Jean Vilander



Established: November 15, 2005
 Total Assets: \$584,487
 Donations this year: \$153,585
 Number of Funds: 11
 Grants awarded this year: \$16,500

2017 Board of Directors
 Dennis Wanklyn-President
 Linda Fincham-Vice President
 Tom Schroeder-Secretary
 K'Lyn Bergman-Treasurer
 Jerry Banaka, John Horigan, Marcy Manley, Scott Steffes, Jerrod Wanklyn, Don Wissman



Established: June 2, 2014
 Total Assets: \$476,010
 Donations this year: \$270,953
 Number of Funds: 48
 Grants awarded this year: \$81,469

2017 Board of Directors
 Jeff Crist - President
 Ryan Smith - Vice President
 Sarah Kessinger - Secretary
 Dennis Kramer -Treasurer
 Bette Lammerding, Bill Phillipi, Candace Wright, Lynn Mayer



**GREATER SABETHA
COMMUNITY FOUNDATION**

Established: November 11, 2015
Total Assets: \$2,570,073
Donations this year: \$1,127,927
Number of Funds: 61
Grants awarded this year: \$525,251

2017 Board of Directors
Von Lauer - Chair
Jim Whittaker - First Vice
Leslie Scoby - Second Vice
Amy Mitchell - Secretary
Doug Clark - Treasurer
Lafe Bailey, Loren Edelman, Marvin
Kohlmeier, Lisa Kuenzi, Steve Lukert,
Martin Mishler, Sherry Scoby, Dr. Bill
Simpson



Established: March 1, 2016
Total Assets: \$2,004,188
Donations this year: \$224,470
Number of Funds: 85
Grants awarded this year: \$198,293

2017 Board of Directors
Darin Miller - Chair
Bart Stewart - Vice Chair
Tasha Langvardt - Treasurer
Joe Braun, John Lonker, Brian Lull,
Sarah Pacheco, Corey Reeves, Emily
Schrader, Daryn Soldan, Bart
Stewart, Richard Weixelman



Established: July 12, 2016
Total Assets: \$70,565
Donations this year: \$70,728
Number of Funds: 7
Grants awarded this year: \$0

2017 Board of Directors
J. D. Euler - President
Ben Gilmore - Vice President
Teresa McAnerney - Secretary
Peggy Franken - Treasurer
Joel Euler, Michael Twombly,
Steve Michaels, Thad Geiger



Established: December 29, 2016
Total Assets: \$500,795
Donations this year: \$499,405
Number of Funds: 11
Grants awarded this year: \$7,957

2017 Board of Directors
Richard Pinaire - Vice Chair
Calvin Pottberg - Chair
Duane Blythe - Secretary
Allen Dinkel, Barbara Craft, David
Walker, ED J. Rolfs, Florence
Whitebread, John Montgomery,
Jolana Montgomery-Matney, Vic
Davis

**Central Charities
Foundation**

Established: December 30, 2016
Total Assets: \$2,858,350
Donations this year: \$123,788
Number of Funds: 18
Grants awarded this year: \$232,996



Established: March 8, 2017
Total Assets: \$225,328
Donations this year: \$218,887
Number of Funds: 3
Grants awarded this year: \$0

2017 Board of Directors
Morree Floersch, Chair
Brad Dieckmann, Vice-Chair
Karen Bryan, Secretary
Robin Thurlow, Treasurer
Jayson Hood, Jill Mugler

GMCF BOARD, STAFF, & TRUSTEES

Executive Board of Trustees

Karen Roberts, Chair
Dean Thibault, Chair Elect
Neal Helmick, Past Chair
Cheryl Grice, Secretary
Therese Miller, Treasurer
Bill Bahr
Matt Crocker
Mile Holen
Matt Paquette
Lisa Ward

GMCF Staff

Vern Henricks '13, President & CEO
Elaine Dhuyvetter '08,
VP Marketing & Programs
Marla Brandon '12, VP Finance
Shanita Thomas '17, Finance Assistant
Mike McCall '17, Director, WCF
Leslie Scoby '17, Affiliate Coord.

Committees

Asset Development

Vern Henricks, Chair
Russ Briggs '03
Charlie Busch '11
Mike Daniels '99
Dave Dreiling '02
Joann Goldstein '16
Jackie Hartman '14
Joleen Hill '02
Doug Hinkin '17
Terry Holdren '15
Neil Horton '02
Mark Knackendoffel '99
Ward Morgan '14
Jon Pope '13
Rose Pritchard '09
Wayne Sloan '15
Rob Stitt '02
Ron Tacha '15
Mary Vanier '99
Linda Weis '14
Fred Willich '17
John White '03

Finance

Therese Miller '10, Chair
Dale Bradley '17
Scott Emley '14

Terry Harts '02
Bernard Irvine '11
Dave Rogers '15
John Walters '17
*Zeb Elliott '16
*Ellen Knackendoffel '16
*Brent Riffel '16

Fiscal Sponsorship

Sue Maes '99, Co-Chair
Matt Crocker '11, Co-Chair
Dirk Daveline '99
Blake Kaus '16
Lana Oleen '05
Bob Shannon '16
*Kayla Savage '16
*Jamie Schrock '16
*Russell Shipley '16

Grants

Mike Holen '02-'13, '15, Chair
Jim Armendariz '08
Mary DeLuccie '02
Gina Dierenfeldt '15
Calvin Emig '16
Cathy Flinchbaugh '02
Mary Lee Graham '15
Eileen Hinkin '15
Jodi Kaus '01
Rhonda Mullin '10
Dave Nelson '16
Janice Reitz '15
Beth Smoller '14
Sheri Westervelt '17
Bill Wolf '16
*Allison Disbrow '16
*Natalie Gordon '16
*Chance Lee '16

Lincoln & Dorothy Deihl Grants

Jo Lyle '06, Chair
Mike Holen '02-'13, '15
Kevin Ingram '11
Dr. Rebecca Klingler '16
Chuck Lyman '15
Barbara Nelson '12
Derrick Roberson '16

Investment

Dean Thibault, '02 Co-Chair
Jim Gordon '99, Co-Chair

Matt Crocker '11
Tom Fryer '02
Eric Higgins '15
Tom Hintz '08
Dennis Mullin '02
Polly Stoecklein '02
David Weaver '14
Don Wissman '03

Marketing

Elaine Dhuyvetter, Chair
Jerry Banaka '09
Lyle Butler '02
Dennis Irvin '03
Dustin Lobaugh '10-'12, '16
Doug Meloan '03
Ned Seaton '01
Gail Urban '10
Lucy Williams '02
*Abby Cavender '16
*Doug Frye '16
*Eric Holderness '16
*James Johnson '16
*Sabrina Mann '16
*Bill Richards '16
*Elizabeth Riffel '16
*Ian Silovsky '17

Nominating

Neil Helmick, '09 Chair
Stacy Kohlmeier '14
Jan Marks '02
David Urban '13
Dan Yunk '03
*Amy Blockcolsky '16
*Eddie Marroquin '16
*Nathan Rose '17

Professional Advisors

Matt Paquette '08, Chair
Mike Holtman '08
Joe Knopp '17
Roger Sink '15
*Caleb Bradley '16
*Andy Ellis '16
*Courtney Ellis '16
*Craig Olsen '16
*Katie Seay '16
*Aaron VonFeldt '16
*Kurt Weber '16

Scholarship

Elaine Dhuyvetter, Chair
Robert Atchison '13
Dave Baker '16
Rosemary Boggs '13
Duane Dunn '03-'04, '16
Kathleen Greene '02
Barb Hayter '02
Michael Oldfather '02
Don Rathbone '02
Bruce Snead '12
*Tracey Bamberger '16
*Emily Dixon '16
*Seth Gordon '16
*Eli Sallman '16
*Gavin Schmidt '16

Special Events

Cheryl Grice '12, Chair
Randy Anderes '15
Ronnie Grice '02
Tanna Thompson '11
*Addie Bunnell '16
*Jennifer Butler '16
*Christy Chase '16
*Jamie Coones '16
*Amy Garman '16
*Michael Juhnke '16
*Zach Langford '17
*Kyle Powers '16
*Matt Pray '16
*Seth Stone '16
*Chris Staley '17
*Ashley Urban '17
*Terin Walters '16

Strategic Initiatives

Bill Bahr '09, Chair
John Armbrust '17
Ron Fowles '17
Marilyn Galle '03
Gordon Hibbard '17
Mo Hosni '06
Rich Jankovich '17
C. Clyde Jones '02
Eugene Klingler '03
Bill Landsdowne '17
Karen McCulloh '02
Charlotte MacFarland '14
Tom Phillips '16
*Ella Casey '16
*Ashley Jensen '17
*Kelly Keogh '16
*Kris Morrison '16
*Tony Parker '16
*Veronica Sims '16

Youth Impacting Community

Kim McAtee '11, Chair
Connie Casper '02
Cheryl Richt '11
*Emily Brueseke '16
*Crystal Koeneke '16
*Rory Peddicord '16
*Mike Mores '16
*Austin Nicholes '17

Affiliate

Lisa Ward '12, Chair
James Bassett '14 (Dover)
Lisa Kuenzi '13 (Sabetha)
Rob Sage '12 (Dover)
Dennis Wanklyn '14 (Frankfort)
Dan Wassenberg '15 (Marysville)
x (Doniphan County)
x (Junction City)
x (Wamego)

Goldstein Foundation '09

Terry Arthur, President '03
Matt Crocker, Vice Pres. '11
Jim Gordon, Treasurer '99
Vern Henricks, Secretary '13
Dirk Daveline '99
Clint Johns NA
Dennis Mullin, '02
Jim Morrison '99
Matt Paquette '08
Lee Taylor '02

Howe Family Foundation '13

Phil Howe, Chairman '14
Bill Riley, President '14
Bill Richter, Vice President '03
Terry Arthur, Treasurer '03
Vern Henricks, Secretary '13

*Young Trustee



Above: 502 Poses for a group photo
Left: Jerry & Betty Banaka, Terry Arthur
Right: C. Clyde Jones with Doug Haverkamp



The Greater Manhattan Community
Foundation is a non-profit 501(c) (3)
organization — EIN #48-1215574,
incorporated in the State of Kansas.